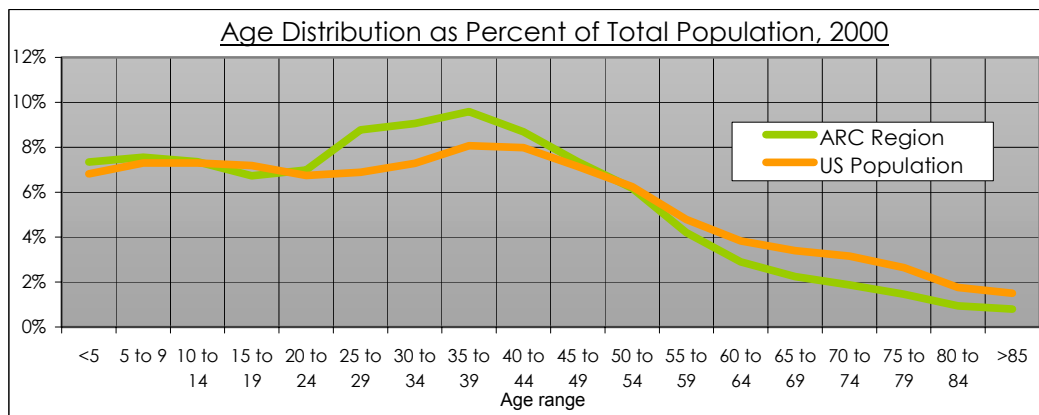
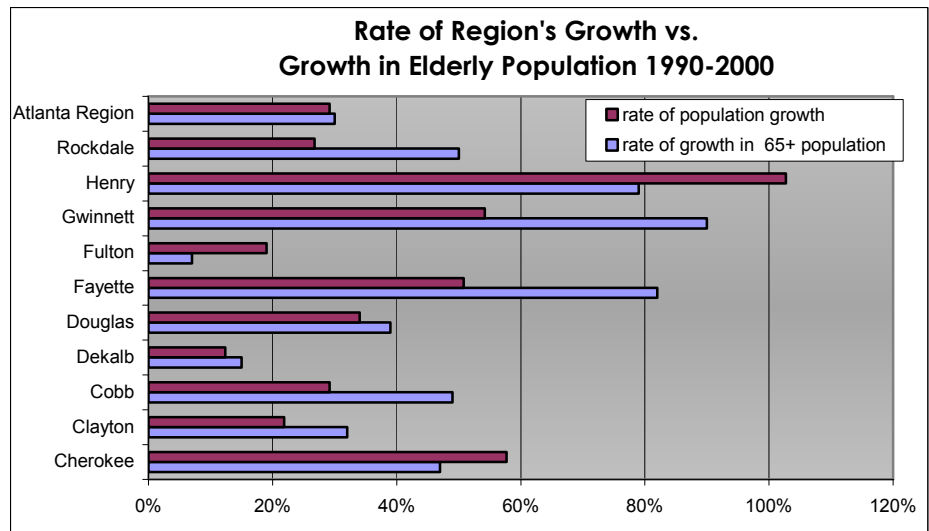


# OLDER ADULTS IN THE ATLANTA REGION

## GROWTH:

The older adult population in the Atlanta Region has grown over the last decade at a rate slightly higher than the general population. Between 1990 and 2000, the 65+ population in the region increased by 30%. In 6 out of the Region's 10 counties, growth in the older adult population exceeded growth in the general population<sup>1</sup>.



Atlanta's population is younger than the US population. The median age in the Atlanta Region is 32, whereas the median age in the United States is 35.3.

## GENERAL:

- 15% of the population living in the Atlanta Region is 55 and older.
- 7% of the Region's population is age 65 or older.
- Of those over the age of 65, 11% are over 85 years old.
- 77% of older adults are white.
- 20% are black.
- 2% are Asian.
- The remaining 1% includes: Pacific Islander, Native American and others.

### Older Adult Population by County, 2000

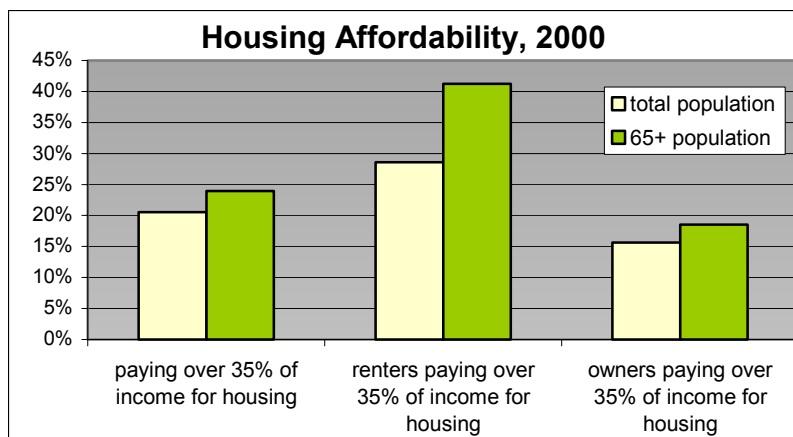
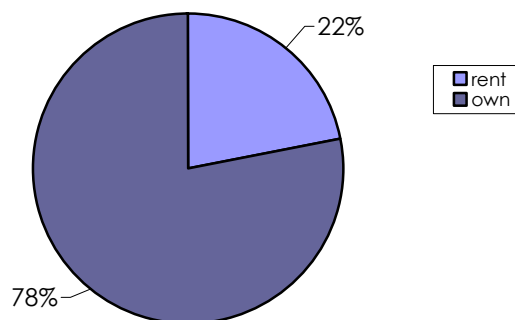
COUNTY	Total population	Total 65+ population	% of population 65+	Total 85+ population	% of population 85+	% of 65+ population that is 85+
Cherokee	141,903	9,349	6.59%	890	0.63%	9.52%
Clayton	236,517	13,840	5.85%	1,024	0.43%	7.40%
Cobb	607,751	42,218	6.95%	4,018	0.66%	9.52%
DeKalb	665,865	53,881	8.09%	6,339	0.95%	11.76%
Douglas	92,174	7,003	7.60%	616	0.67%	8.80%
Fayette	91,263	8,224	9.01%	727	0.80%	8.84%
Fulton	816,006	69,623	8.53%	9,582	1.17%	13.76%
Gwinnett	588,448	29,430	5.00%	9,233	1.57%	31.37%
Henry	119,341	8,777	7.35%	803	0.67%	9.15%
Rockdale	70,111	6,058	8.64%	624	0.89%	10.30%
ARC Region	3,429,379	248,403	7.24%	33,856	0.99%	13.63%

## HOUSING:

Housing continues to pose one of the most daunting challenges to older adults in the Atlanta Region. Most seniors want to stay in their communities and homes as long as possible. It is often inadequate or unaffordable housing that forces them to move.

- While the vast majority of older adults are homeowners, 22% of older adults are renters.
- The rate of homeownership varies by county. Henry County, with a 90% rate of homeownership among its 65+ population, has the highest in the Region. Fulton County has the lowest rate at 67% homeownership.
- Many older adults have aged in place: 33% of the 65+ population have lived in their current residence since 1970.

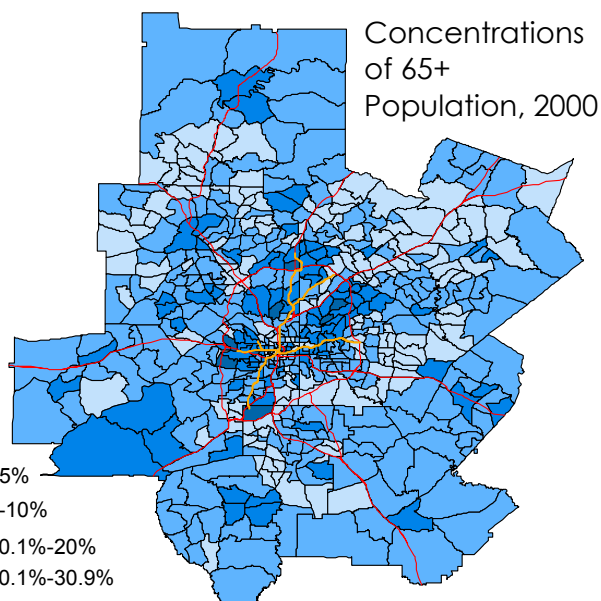
65+ Population Rent v. Own, 2000



- Older adults are living in older homes, increasing the need for home modification and repair: 30% of the population age 65 and over live in homes built before 1950.
- Housing affordability is a particular problem for older adults. Almost 25% of residents over age 65 pay more than 35% of their income for housing. The problem is particularly acute for older renters.

## WHERE OLDER ADULTS LIVE

Older Adults reside throughout the Atlanta Region. As individuals age in place, however, some communities have higher concentrations of older adults than others. When the percentage of older adults living in any one neighborhood reaches 25%, the community is commonly referred to as a Naturally Occurring Retirement Community (NORC).



## INCOME:

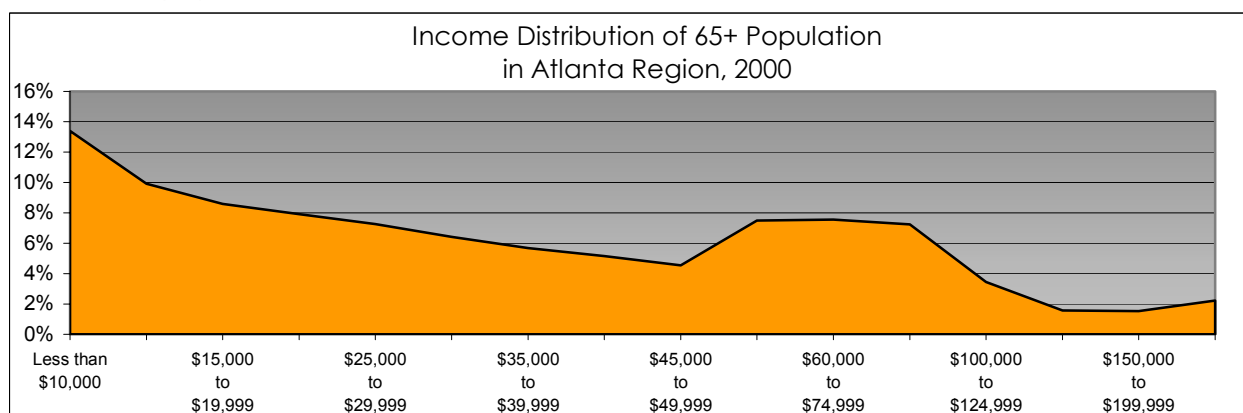
The income distribution of the Region's 65+ population reflects the income distribution of older adults in the United States, peaking at the poverty level and again in the upper middle class. There are some variations between the nation and the Atlanta Region, making Atlanta's older adult population slightly wealthier than the nation's 65+ population.

### Atlanta:

47% of older adults have incomes < \$30,000  
15% have incomes between \$50,000 and \$75,000

### United States:

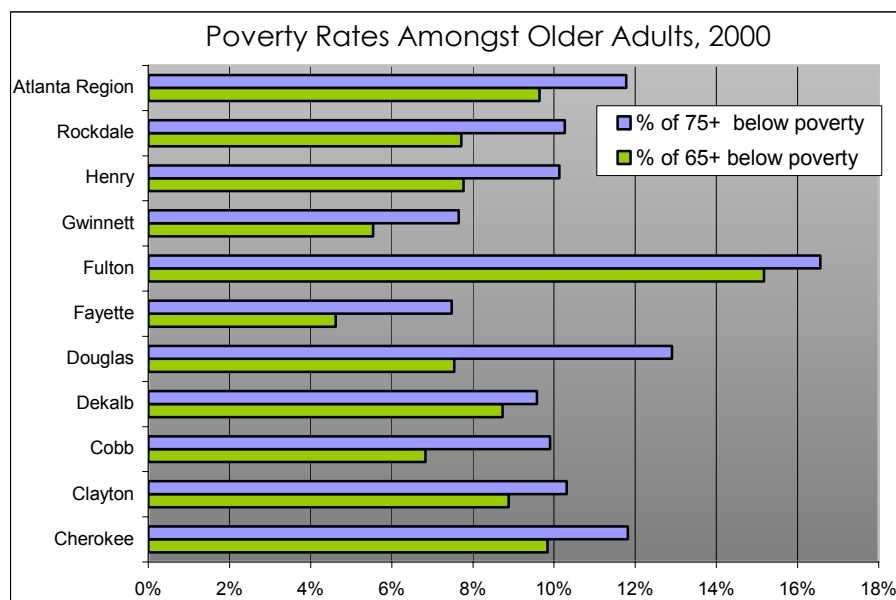
55% of older adults have incomes < \$30,000  
11% have incomes between \$50,00 and \$75,000



## POVERTY

**9.64%** of Atlantans over age 65 are living below poverty and **11.77%** of those over age 75 are living below poverty.

Poverty in the Region has a racial dimension as well, 43% of older adults living below poverty in the Atlanta Region are African-American.



### 65+ POPULATION, 2000

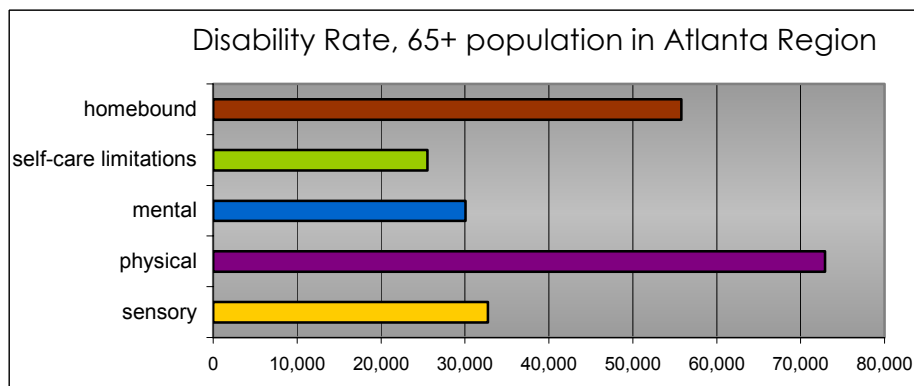
	MALE	FEMALE
married	69,782	52,415
widowed	12,937	72,318
divorced	7,028	14,186
separated	4,968	7,378
never married	3,722	5,824

## MARITAL STATUS

The marital status of a 65+ individual in the Atlanta Region is highly dependent on the individual's gender. The majority of women over age 65 are widows and the majority of men over age 65 are married.

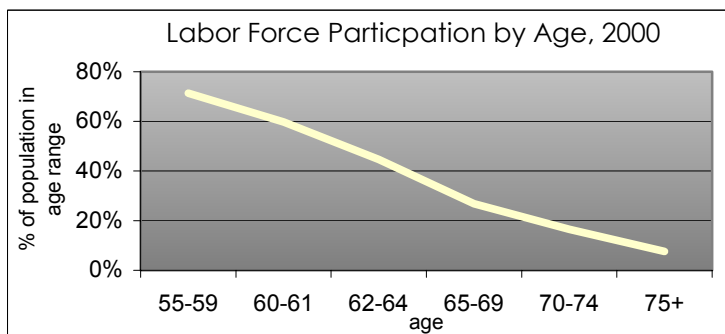
## **HEALTH:**

- 95% of older adults in Georgia are covered under the Medicare program.
- 10% of older adults receive benefits from the Medicaid program.
- 23% of the 65+ population has a disability which impedes their ability to leave their home.
- 6535 older adults in the Atlanta Region, only 3% of the 65+ population, are living in nursing homes.



In fiscal year 2002, the State of Georgia spent \$255,684,877 on Medicaid benefits for the 60+ population in the Atlanta Region. Over half of those dollars were paid to long term care facilities and an additional 30% funded the purchase of prescription drugs.

## **LABOR FORCE and TRANSPORTATION:**



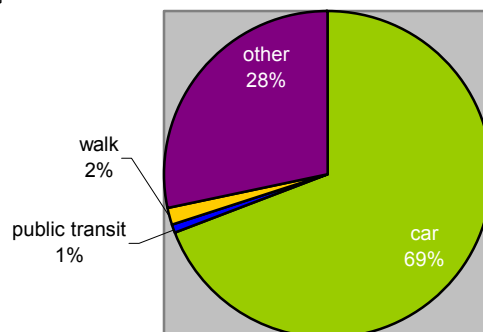
As with most other regions in the country, labor force participation in the Atlanta Region decreases with age. By age 75, almost all older adults in Atlanta are no longer participating in the formal labor force.

Most individuals use private automobiles to get around the Atlanta region—either driving their own car or riding as a passenger in another's vehicle.

## **MORE ABOUT OLDER ADULTS:**<sup>3</sup>

- \* 70% of older adults living in Atlanta were not born in Atlanta
- \* 57% originally moved to Atlanta because of a job
- \* 83% are satisfied with Atlanta as a place to live
- \* 40% report that they stay in Atlanta to be close to their family and friends.

Transit Modes of 65+ Population<sup>2</sup>



<sup>1</sup> Unless otherwise stated data reported is from the 2000 US Census.

<sup>2</sup> ARC 2002 Transportation Survey

<sup>3</sup> ARC Platforms for Progress Survey